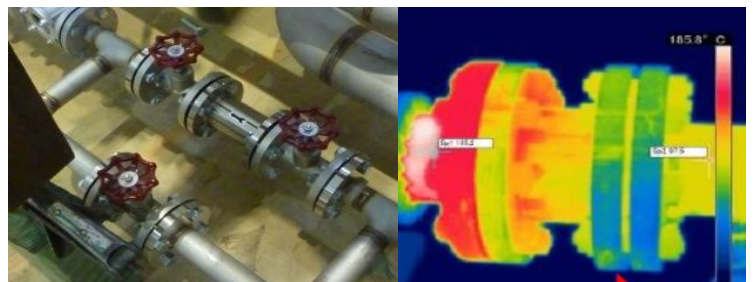
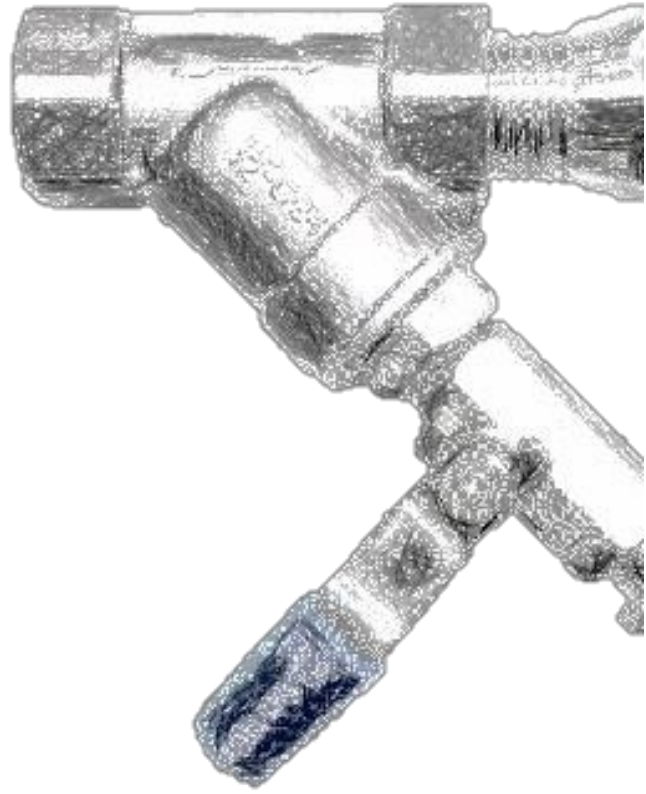
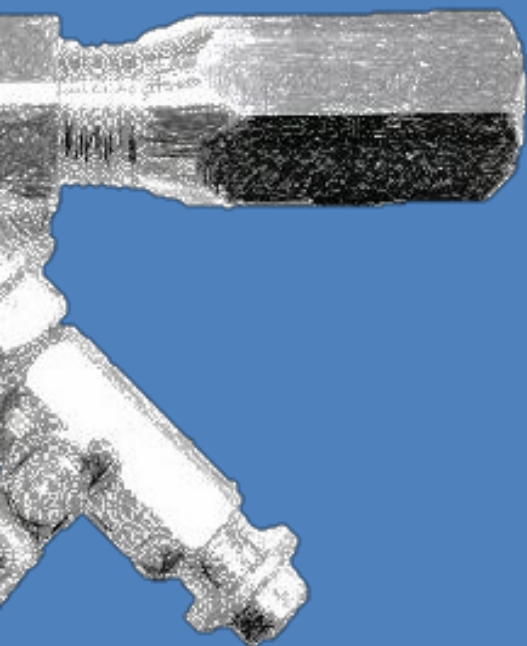
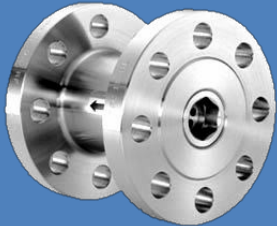
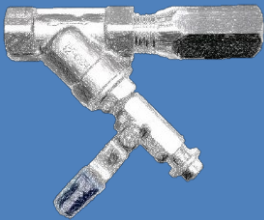


ORIFICE TYPE STEAM TRAP

# O-TRAP

Energy &  
Fuel cost saving design



**O** >>> NOTICE  
**TRAP**



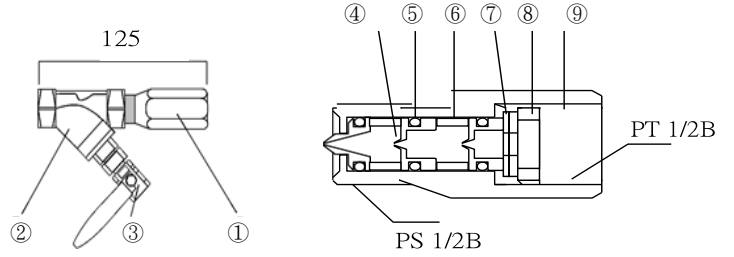
LOW PRESS. TYPE

SMALL CAP. TYPE



DRAINAGE CAP. 675.5 kg/h  
DIFFERENTIAL PRESS. 1.0 Mpa

**15A TYPE ( O-TRAP No.0 to No.9 )**  
MAX PRESS. 1.6 Mpa · G / MAX TEMP. 200 °C



NUMBER	PART NAME	MATERIAL
①	BODY	SUS303
②	Y-STRAINER	SCS14A
③	BALL VALVE	SCS14A
④ ⑥	ORIFICE · SPACER	SUS303
⑤	O- RING	VITON
⑦ ⑧	SPG · WASHER	SUS304
⑨	BUSHING	SUS304

MEDIUM PRESS.  
SMALL CAP. TYPE

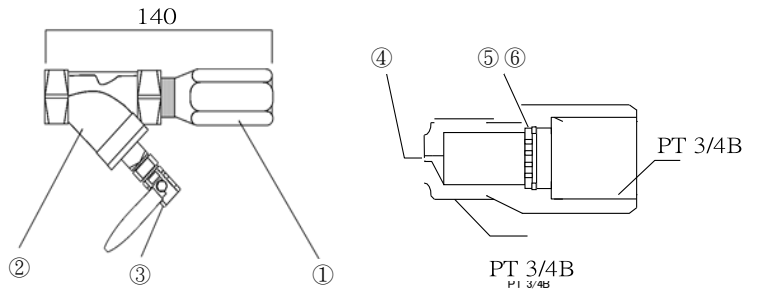
HIGH PRESS.  
LARGE CAP. TYPE

MEDIUM CAP. TYPE



DRAINAGE CAP. 3,175 kg/h  
DIFFERENTIAL PRESS. 1.0 Mpa

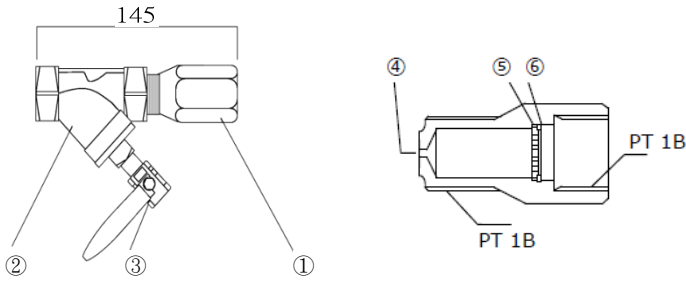
**20A TYPE ( O-TRAP No.10 to No.19 )**  
MAX PRESS. 1.6 Mpa · G / MAX TEMP. 200 °C



NUMBER	PART NAME	MATERIAL
① ④	BODY	SUS303
②	Y-STRAINER	SCS14A
③	BALL VALVE	SCS14A
⑤	MULTI ORIFICE	SUS304
⑥	SNAP RING	SUS304

ULTRA LARGE  
CAP. TYPE

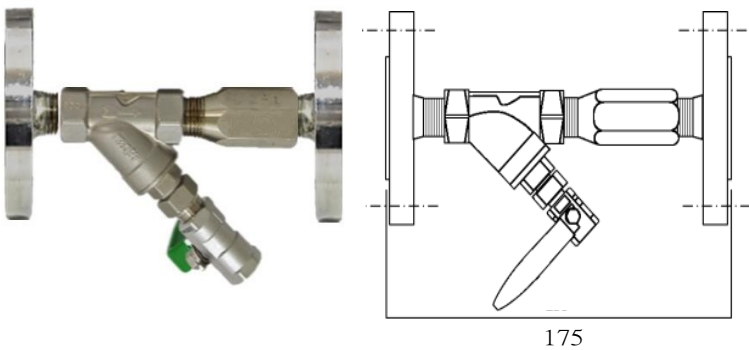
**25A TYPE ( O-TRAP No.20 to No.26 )**  
**MAX PRESS. 1.6 Mpa · G / MAX TEMP. 200 °C**



NUMBER	PART NAME	MATERIAL
① ④	BODY	SUS303
②	Y-STRAINER	SCS14A
③	BALL VALVE	SCS14A
⑤	MULTI ORIFICE	SUS304
⑥	SNAP RING	SUS304

● MAIN DIMENSION-FLANGE CONNECTION TYPE ( JIS-10K · RF )

SIZE	FLANGE		BOLT HOLE		
	D	t	C	n	h
15	95	12	70	4	15
20	100	14	75	4	15
25	125	14	90	4	19
32	135	16	100	4	19
40	140	16	105	4	19
50	155	16	120	4	19
65	175	18	140	4	19
80	185	18	150	8	19



L mm	15A TYPE	20A TYPE	25A TYPE
		175	195

※Inquiries on matters other than the above are also welcome.  
 Please feel free to contact us.

LARGE CAP. TYPE



DRAINAGE 7,510 kg/h  
 DIFFERENTIAL PRESS. 1.0 Mpa

LOW PRESS. TYPE

MEDIUM PRESS.  
 SMALL CAP. TYPE

HIGH PRESS.  
 CAP. TYPE

ULTRA LARGE  
 CAP. TYPE

LOW PRESS. TYPE



DRAINAGE CAP. 993.0 kg/h  
DIFFERENTIAL PRESS. 10.0 Mpa

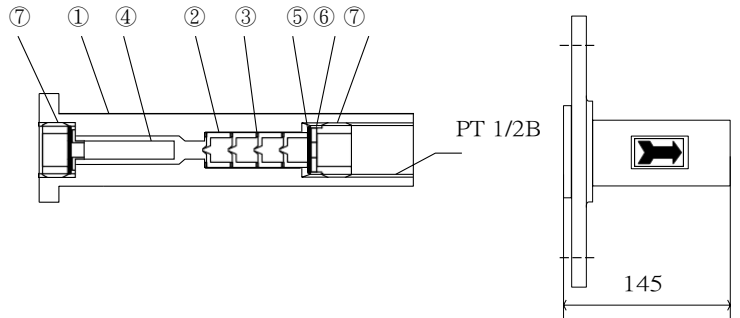
MEDIUM PRESS. SMALL CAP. TYPE

HIGH PRESS. LARGE CAP. TYPE

ULTRA LARGE CAP. TYPE

Model : O-TRAP M No.1 / No.2

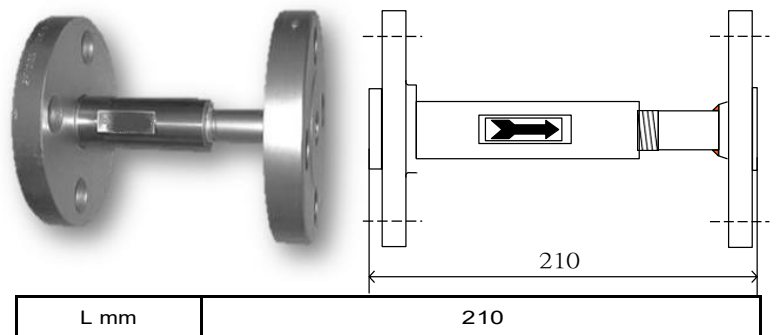
MAX PRESS. 20.0 Mpa · G / MAX TEMP. 400 °C



NUMBER	PART NAME	MATERIAL
①	BODY	SUS304
②	ORIFICE	SUS316
③	GASKET	SUS304
④	FILTER	SUS304
⑤ ⑥	SPG · WASHER	SUS304
⑦	BUSHING	SUS304
	LAPFRANGE	A105

● MAIN DIMENSION-FLANGE CONNECTION TYPE ( JPI-600LB · RF )

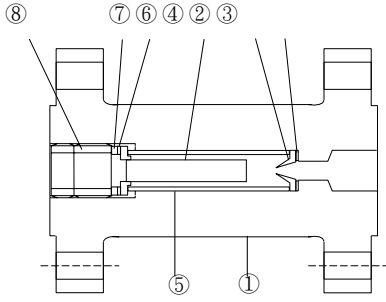
SIZE	FLANGE		BOLT HOLE		
	B	Q	C	n	h
1/2	95	14.5	66.5	4	16
3/4	117	16	82.5	4	19
1	124	18	88.9	4	19
1 1/4	133	21	98.6	4	19
1 1/2	155	22.5	114.3	4	22
2	165	25.5	127	8	19
2 1/2	190	28.5	149.4	8	22



L mm	210
------	-----

# Model : O-TRAP H

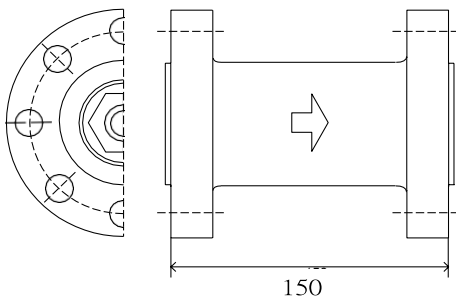
MAX PRESS. 20.0 Mpa · G / MAX TEMP. 500 °C



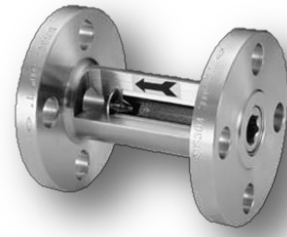
NUMBER	PART NAME	MATERIAL
①	BODY	SUS304
②	ORIFICE	SUS304
③	GASKET	SUS304
④	FILTER	SUS304
⑤	SPACER	SUS304
⑥ ⑦	SPG · WASHER	SUS304
⑧	BUSHING	SUS304

## ● FLANGE STANDARD

STANDARD	CLASS	NOMINAL DIAMETER
JIS	10K – 63K	25A – 200A
JPI · ANSI	150LB – 2500LB	1B – 8B



L mm	150
------	-----



DRAINAGE CAP. 15,932 kg/h  
DIFFERENTIAL PRESS. 4.5 Mpa

LOW PRESS. TYPE

MEDIUM PRESS. SMALL CAP. TYPE

HIGH PRESS. CAP. TYPE

ULTRA LARGE CAP. TYPE

LOW PRESS. TYPE



DRAINAGE CAP. ∞ kg/h  
DIFFERENTIAL PRESS. 4.0 Mpa

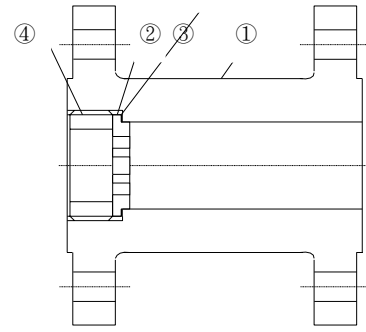
MEDIUM PRESS.  
SMALL CAP. TYPE

HIGH PRESS.  
LARGE CAP. TYPE

ULTRA LARGE  
CAP. TYPE

## Model : O-TRAP EL

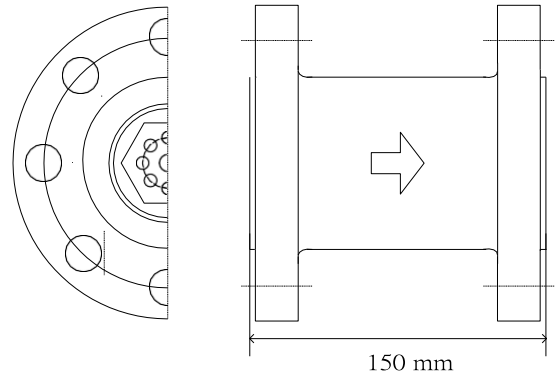
MAX PRESS. 20.0 Mpa · G / MAX TEMP. 500 °C



NUMBER	PART NAME	MATERIAL
①	BODY	SUS304
②	ORIFICE	SUS304
③	GASKET	SUS304
④	BUSHING	SUS304

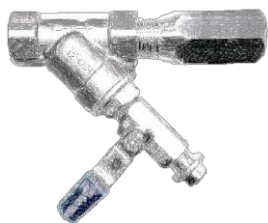
### ● FLANGE STANDARD

STANDARD	CLASS	NOMINAL DIAMETER
JIS	10K – 63K	25A – 200A
JPI · ANSI	150LB – 2500LB	1B – 8B



L mm	150
------	-----

# O >>> NOTICE TRAP



For more information  
Please contact



**ACHSO (Thailand) CO.,LTD.**

555/47 Soi Sathupradit 45, Chong Nonsi  
Yannawa , Bangkok 10120

Contact : Surasak S.

Tel : (089) 6688699

E-mail : [surasak@ecospanthai.com](mailto:surasak@ecospanthai.com)

Line ID : @ecospan